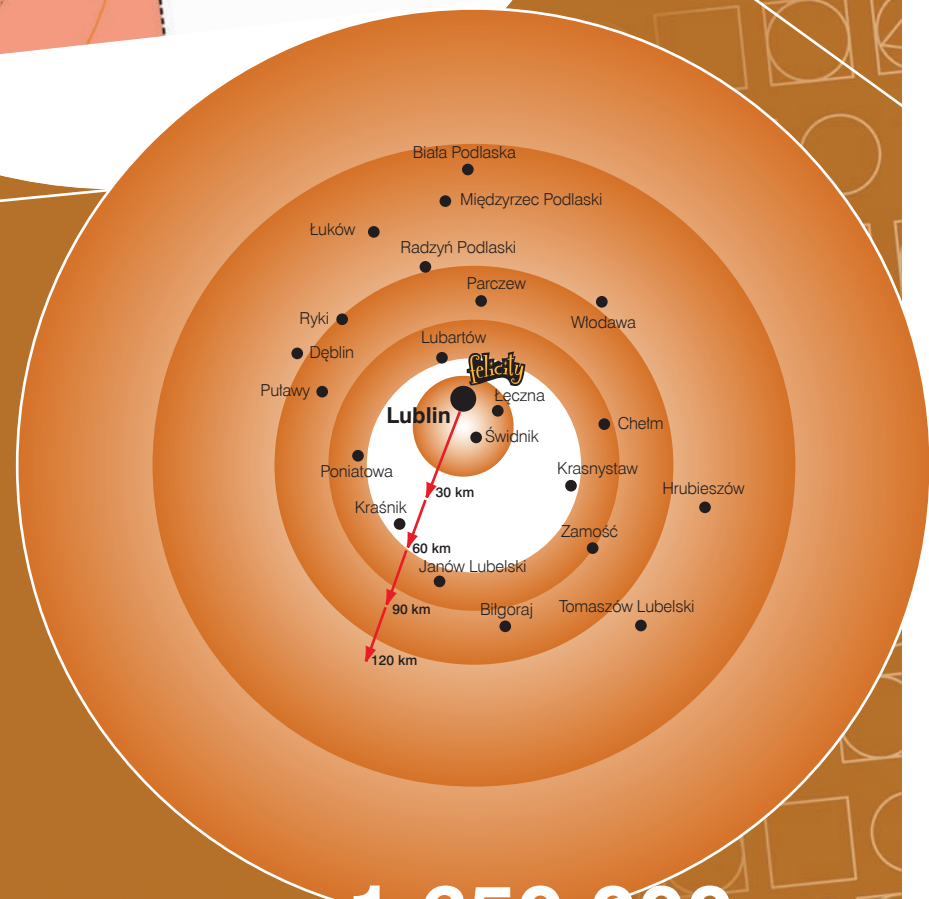
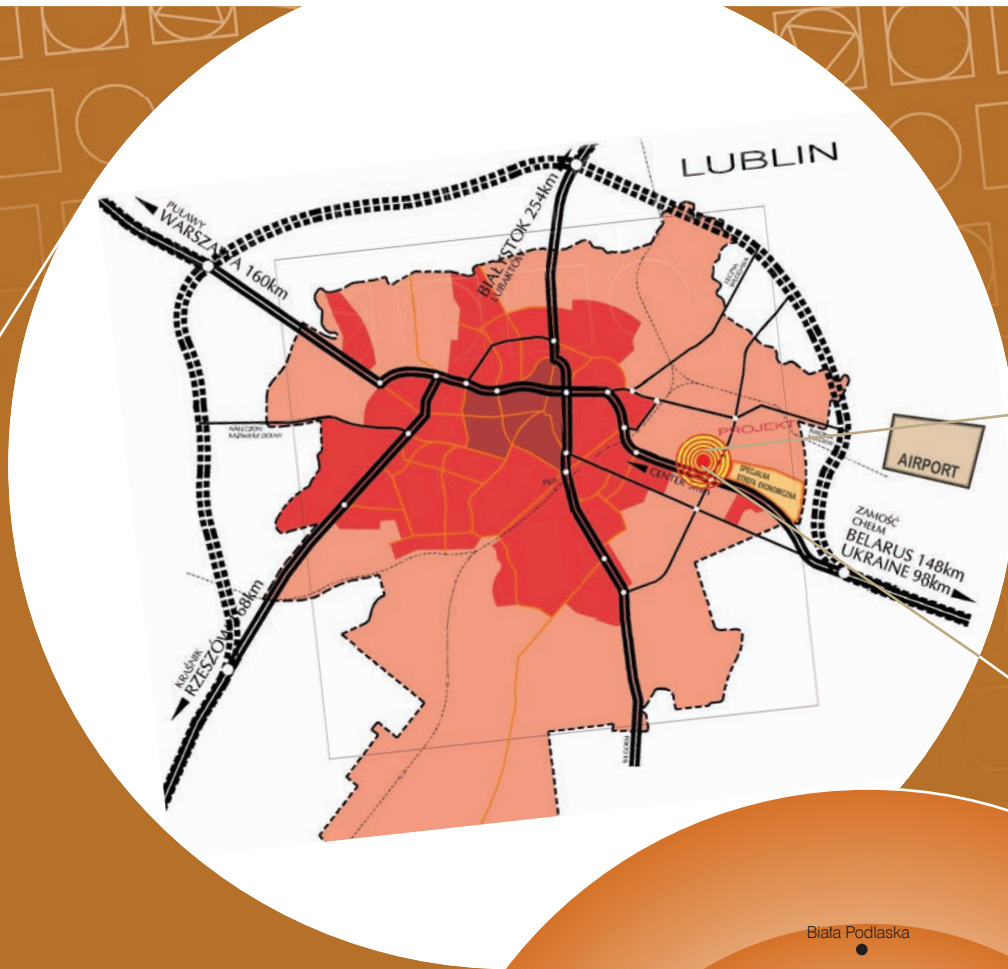




**felicity**  
*Solid bliss*

**Grand Opening**  
**2009**





The Felicity Shopping Centre offers great opportunities to its customers and tenants thanks to:

- a convenient location in a dynamically developing city (1 650 000 people in the catchments area),
- its unique scale (the largest shopping, entertainment and services complex in the region),
- modern architecture and carefully arranged surroundings.

Population within the catchments area: **1 650 000** people

90 000 people  
(15 min.)

140 000 people  
(16-25 min.)

130 000 people  
(26-35 min.)

1 290 000 people  
(36-90 min.)

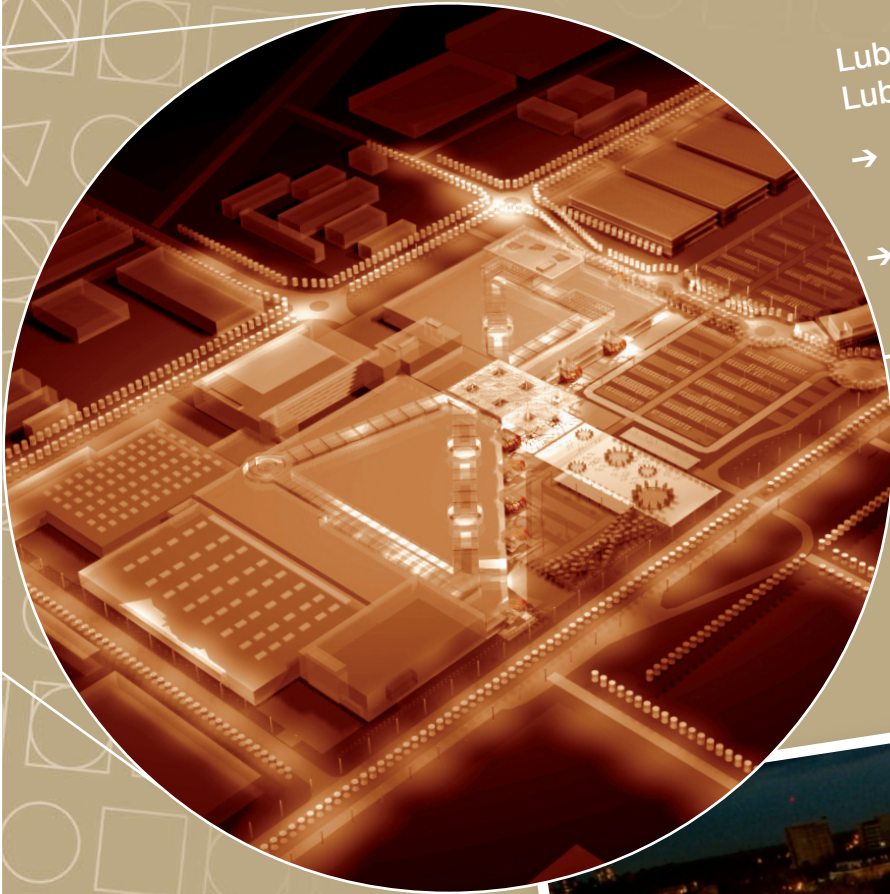
*A city  
full of  
opportunities*

*Aravindhi & GMD*



Lublin attracts new investments due to its unique economic advantages.  
Lublin is a city full of assets:

- a large, young and dynamically growing city (356 000 inhabitants, over 85 000 students from all over Poland),
- an important centre for economic relations between the East and West (100 km off the Ukrainian border),
- an area of intensive infrastructural development (Świdnik airport) and special economic areas, as well as an important cultural centre,
- a city famous for its historic heritage objects, three of which: 700-year-old Basilica of the Dominican Friars, the Church of the Holy Trinity (known as the Chapel of Lublin Castle) and the Lublin Union Monument have recently been included in the list of European cultural heritage treasures, an honour no less prestigious than the UNESCO's World Cultural Heritage list.



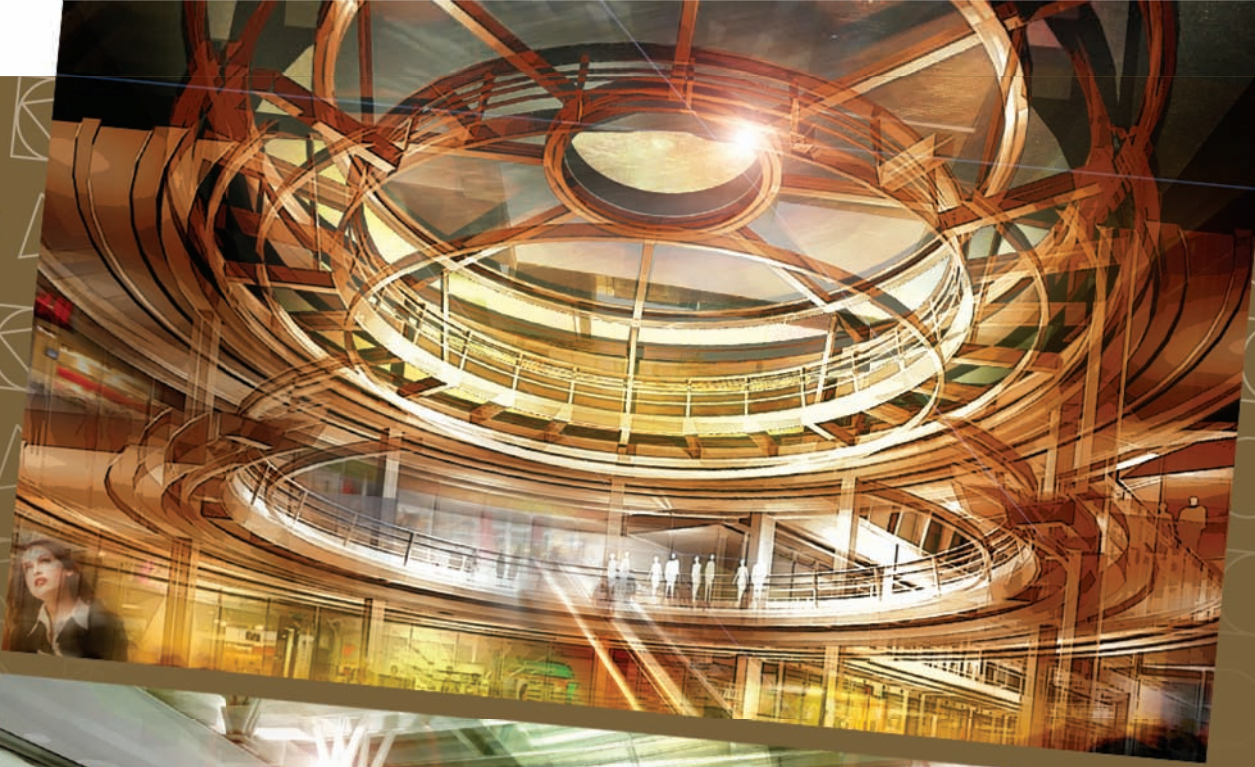
*felicity*



*felicity*







*felicity*



**Location:**

Lublin, Felin quarter,  
Al. Wincentego Witosa

**GBA:**

125 000 m<sup>2</sup>

**GLA:**

100 000 m<sup>2</sup>

**Anchor tenants:**

Hypermarket Real: 12 700 m<sup>2</sup>  
Leroy Merlin: 11 000 m<sup>2</sup>  
Electro World: 4 000 m<sup>2</sup>  
Multikino (10 screens): 4 000 m<sup>2</sup>

**Shopping gallery:**

approx. 260 shops

**Cafes, bars, restaurants:**

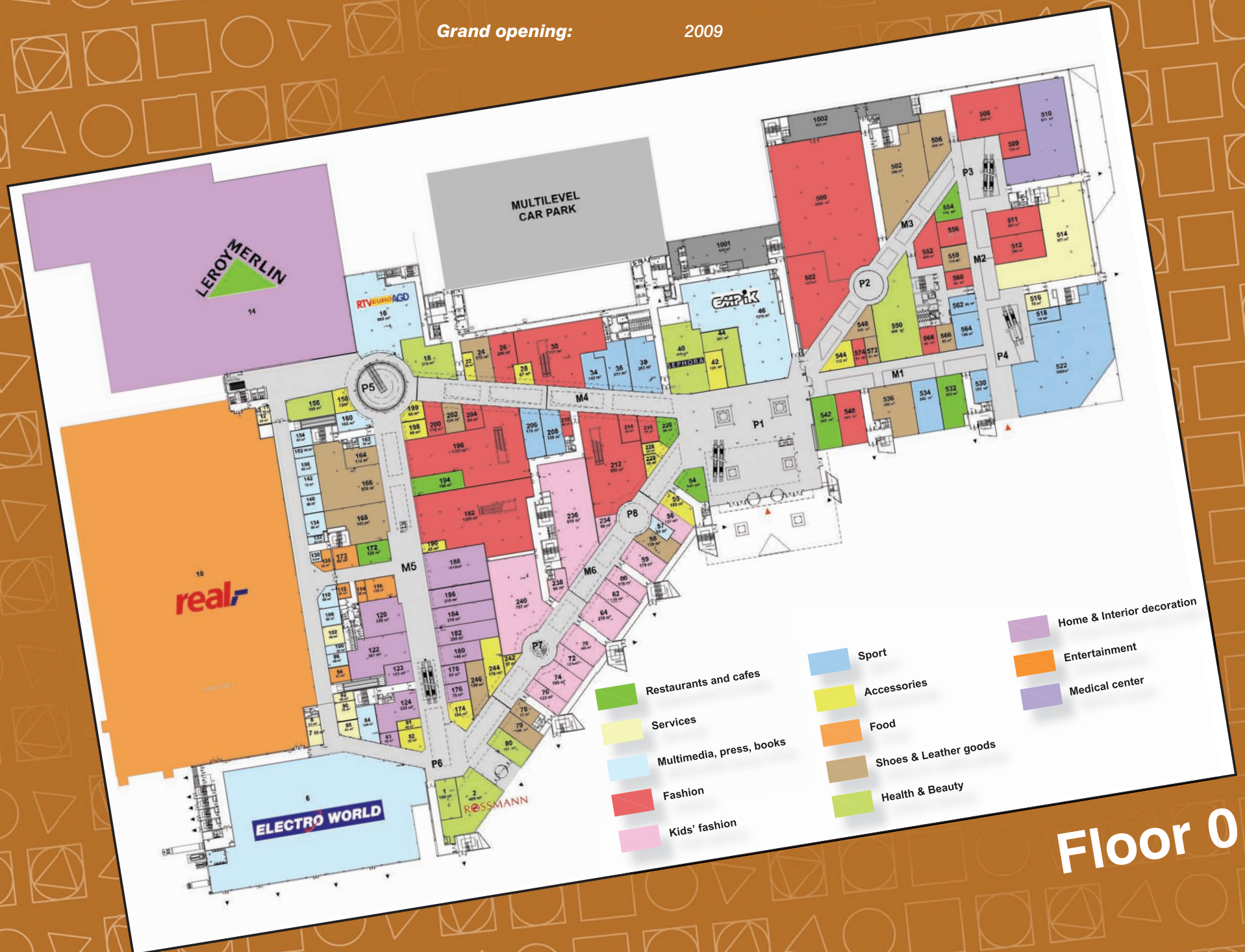
approx. 25

**Car park:**

approx. 3 000 cars

**Grand opening:**

2009

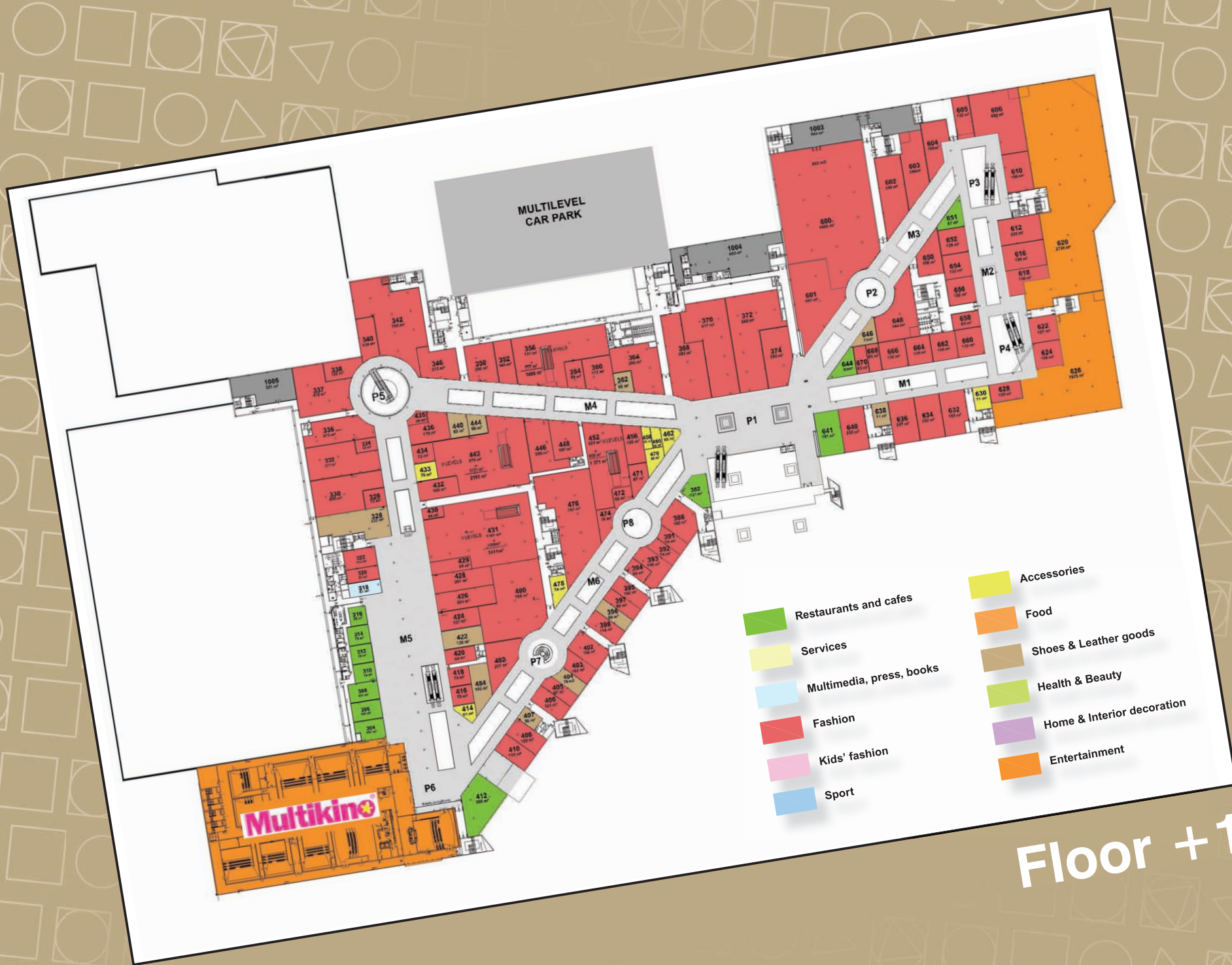


**Floor 0**



ከግልጽ ግልጽ





Floor +1





LEROY MERLIN

ELECTRO WORLD

real

EMPIK

coffee  
heaven

SEPHORA

5.10.15.

PUMA

VENEZIA



ecco

Reebok

RTVEUROAGD

Multikino

adidas

and many others!

ROSSMANN

Centrum Handlowe Felin Sp. z o.o., ul. Krakowskie Przedmieście 54, 20-002 Lublin

Investor:  
MeinEuropean Land Group  
Al. Jerozolimskie 148  
02-326 Warszawa

Developer:  
Gray International  
al. Jana Pawła II 80  
00-175 Warszawa

Commercial space lease:  
Gray International  
lease@grayinter.pl  
+48 22 435 18 00