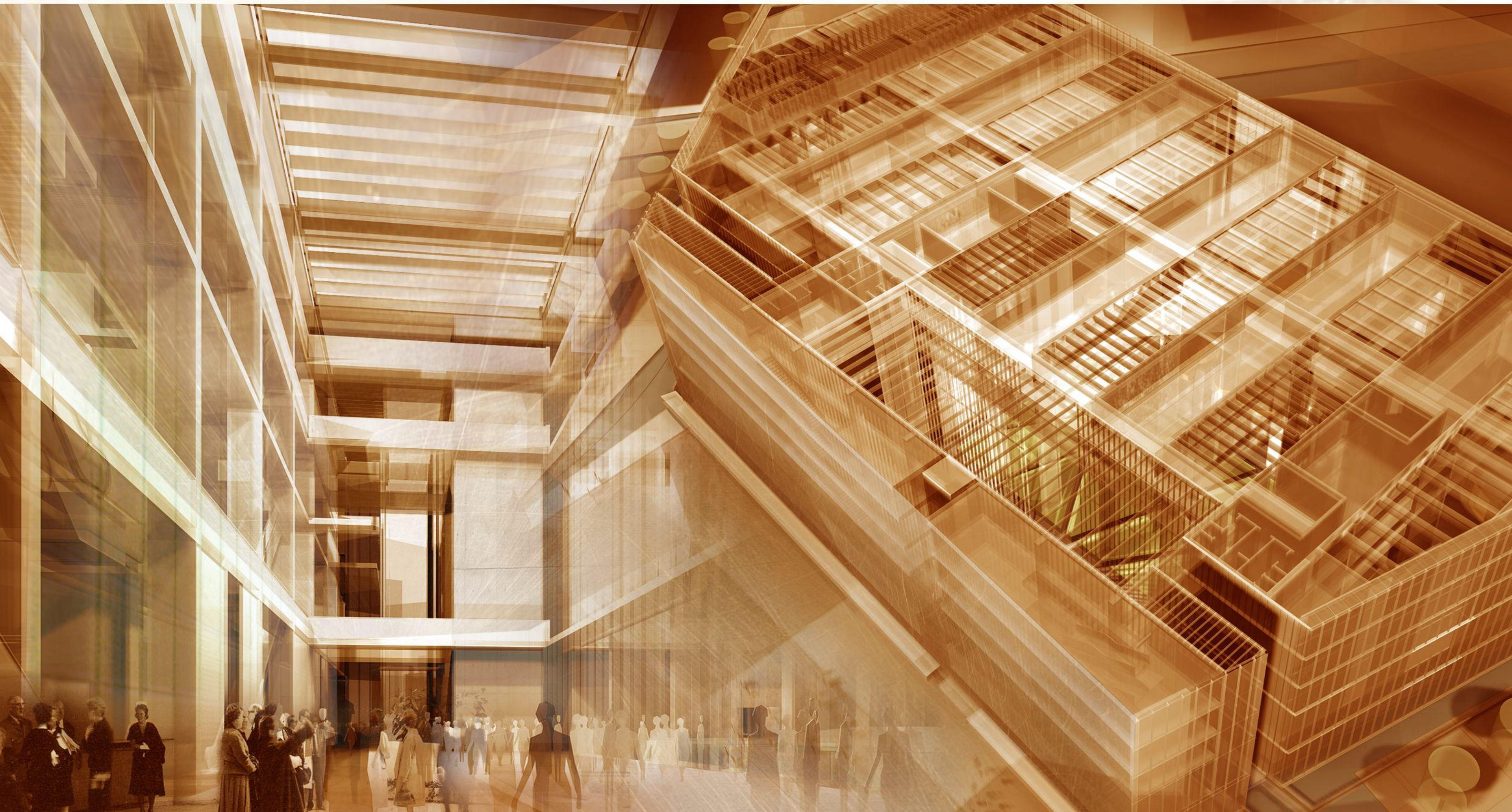


STEFANIA SZCZEPANSKA
TUM

GDANSK – EUROPEAN SOLIDARITY CENTER

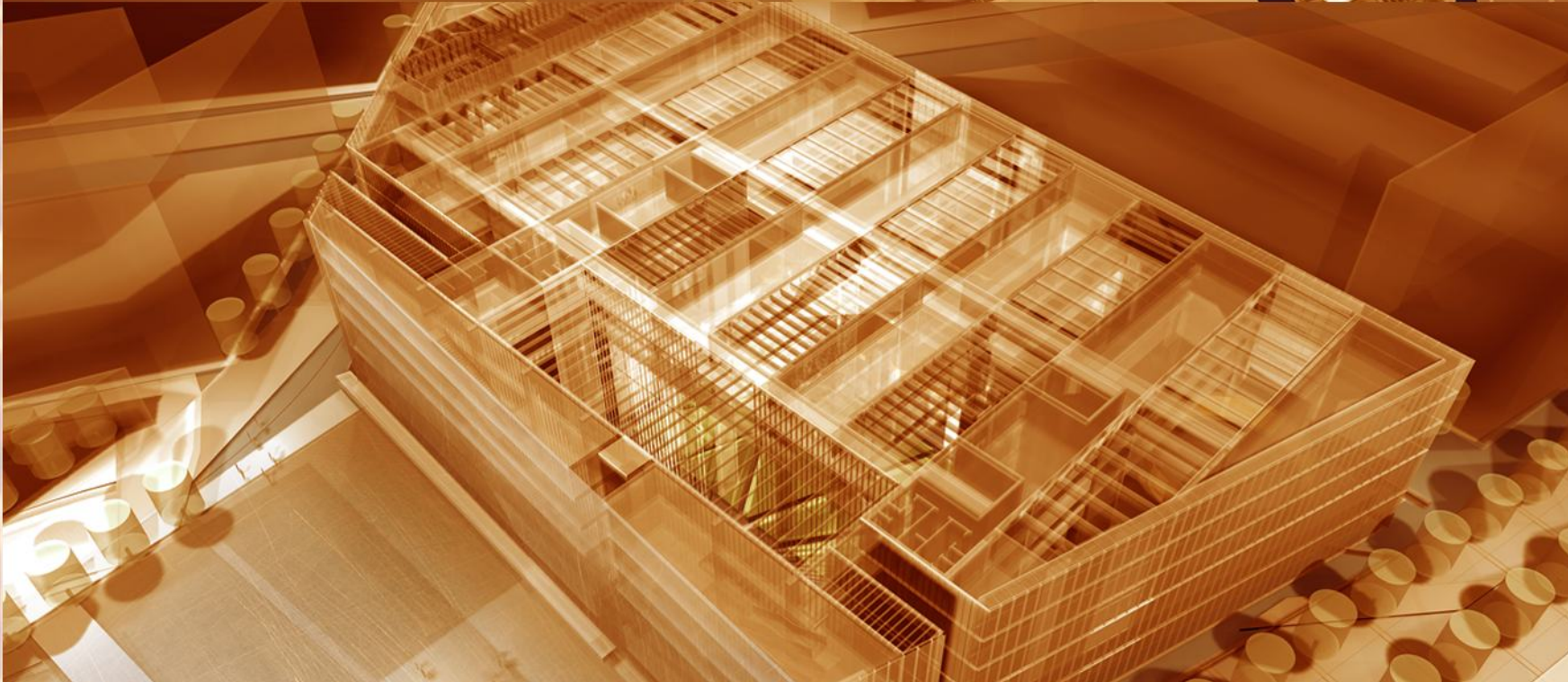




SCALE OF THE PROJECT

1. - SCALE OF THE CITY

2. - SCALE OF THE SQUARE



3. - SCALE OF THE BUILDING



4. - SCALE OF THE INTERIOR



GDAŃSK – EUROPEAN SOLIDARITY CENTRE

THE FUTURE – LIGHT

A LIGHT, SPACIOUS BUILDING FULL OF GREENERY AND LIGHT, WHICH SYMBOLIZES CONTEMPORARY POLAND AND EUROPE

THE WALL – A SYMBOL

SHOWING THAT AWAKENED, COLLECTIVE HUMAN SOLIDARITY WILL OVERCOME ALL OBSTACLES

THE SILENCE – RECOLLECTION

A TRIBUTE TO PEOPLE WHOSE DEATH SHOWED THE WAY AND AWAKENED CONSCIENCES

THE SQUARE – EMPTINESS

SYMBOLIC SPACE SHOWING POLAND'S LATEST HISTORY SET IN CONCRETE FLOOR



SHIPYARD

SOLIDARITY SQUARE

THE OLD TOWN

ST. MARY'S CHURCH

THE LONG MARKET

GRANARY ISLAND

FORTIFICATIONS



1000 YEARS' HISTORY
A CITY WITH A RICH HISTORY, KNOWN IN
EUROPE FOR CENTURIES



GDAŃSK – A EUROPEAN CITY



SCALE OF THE CITY

AMBITIOUS PLANS FOR TODAY

TWO LARGE URBAN PROJECTS TO BE REALIZED IN THE VERY HEART OF GDAŃSK

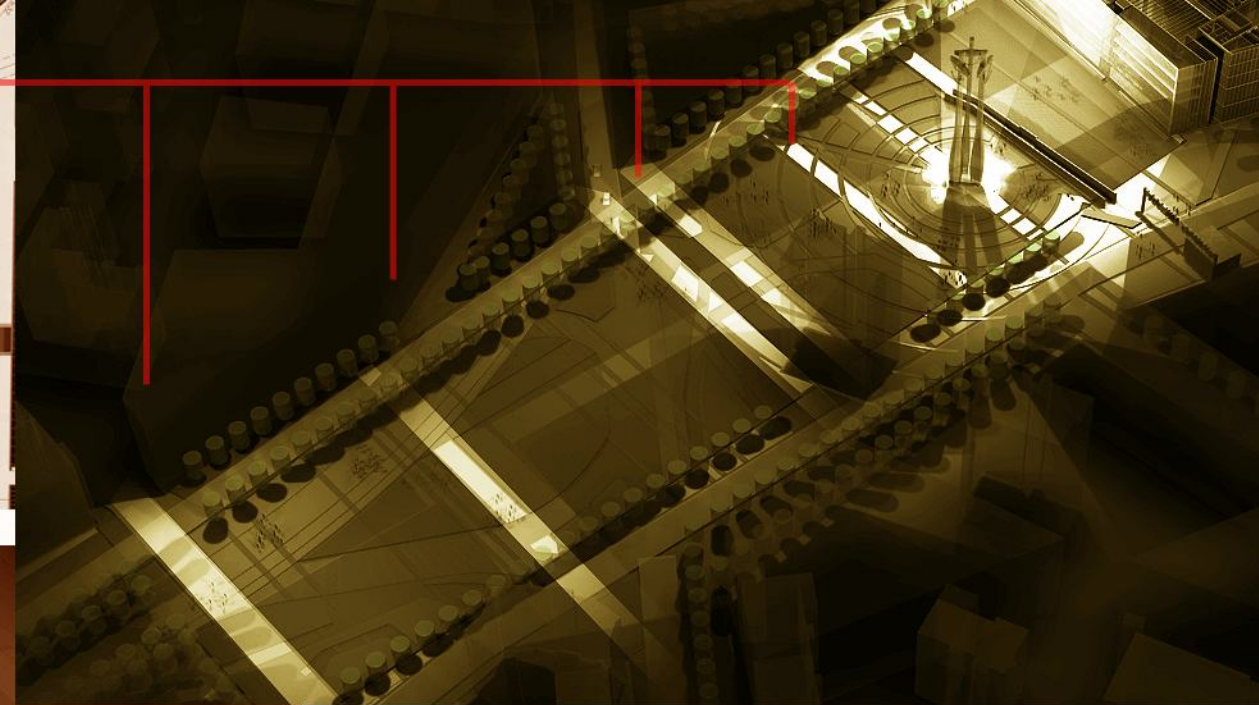
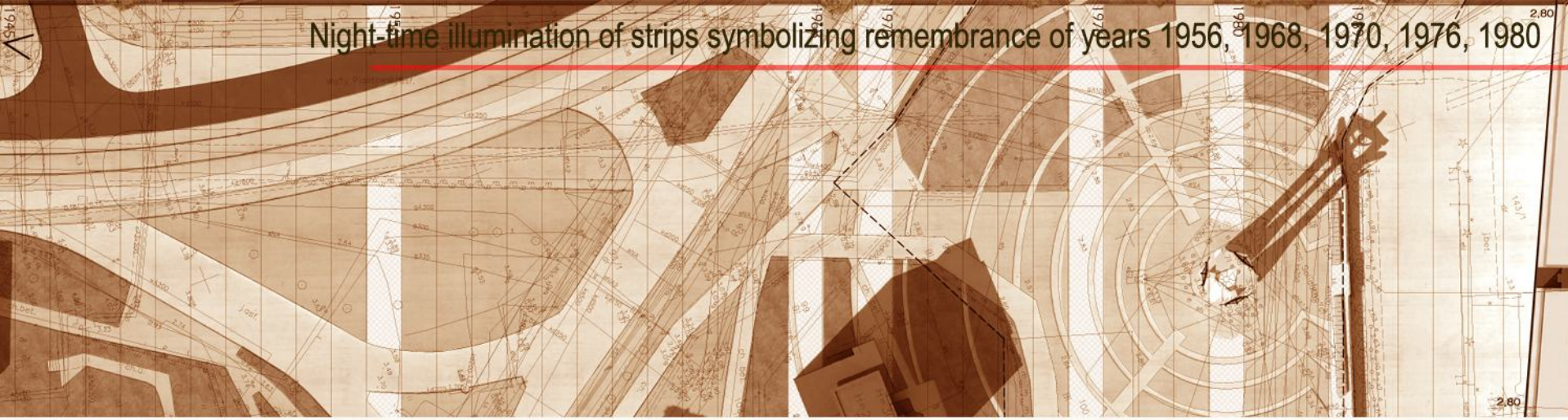
YOUNG CITY

A NEW CITY DISTRICT LOCATED WITHIN THE FORMER SHIPYARD SITE. MODERNITY AND VIGOUR OF CONTEMPORARY ARCHITECTURE IN THE CONTEXT OF DOWNTOWN BUILT-UP AREA, CONCENTRATED AROUND THE SOLIDARITY SQUARE

GRANARY ISLAND

RECREATION OF THE HISTORIC ATMOSPHERE OF OLD GRANARIES DIRECTLY OPPOSITE THE OLD TOWN, BASED ON THE AXIS OF CHMIELNA STREET, INCLUDING A MODERN CENTRAL SQUARE

Night-time illumination of strips symbolizing remembrance of years 1956, 1968, 1970, 1976, 1980



TRIBUTE TO THE PAST

1956
1968
1970
1976
1980

REMEMBRANCES OF DAILY LIFE:

Tower block from the 1970s

Route of "Jana z Kolna" street


Tram line route

RECOLLECTION – HISTORY

The square is a record of traces. Traces of various importance and meaning. There are concrete cracks of symbolic significance but there is also a trace of Jan from Koln Street, the pavements and paths on the square, the former tramline. These are, as if immersed in Pompeii lava, petrified in concrete and silica, so as to unite the idea of the Polish road to freedom with everyday life. The square is an allegory of permeating everyday life with fight for independence, and unity of the most important with the trivial.

The concrete surface preserves the existing land development elements as traces of the past. The existing residential building, situated within the concrete strip, is adopted as a living remnant of The People's Republic of Poland. The building, together with the furniture, will be renovated to remind us of the times when it was built. Traces of the current arrangement will also remain - roads, pavements, and footpaths as if filled with concrete.

In one part of the square, along the Road to Freedom, there will be special zones for leaving souvenirs, inscriptions and individual marks. For it was a road taken by the whole Nation and each individual Pole alike.



TRAFFIC LAYOUT IS SUBORDINATED TO THE SQUARE
STREETS ON THE PERIMETER OF THE SQUARE ENABLE EASY
TRANSPORT WITHOUT CROSSING THE PEDESTRIAN ZONE
THE SQUARE BECOMES PART OF THE YOUNG CITY




GDAŃSK – SOLIDARITY SQUARE

SCALE OF THE SQUARE

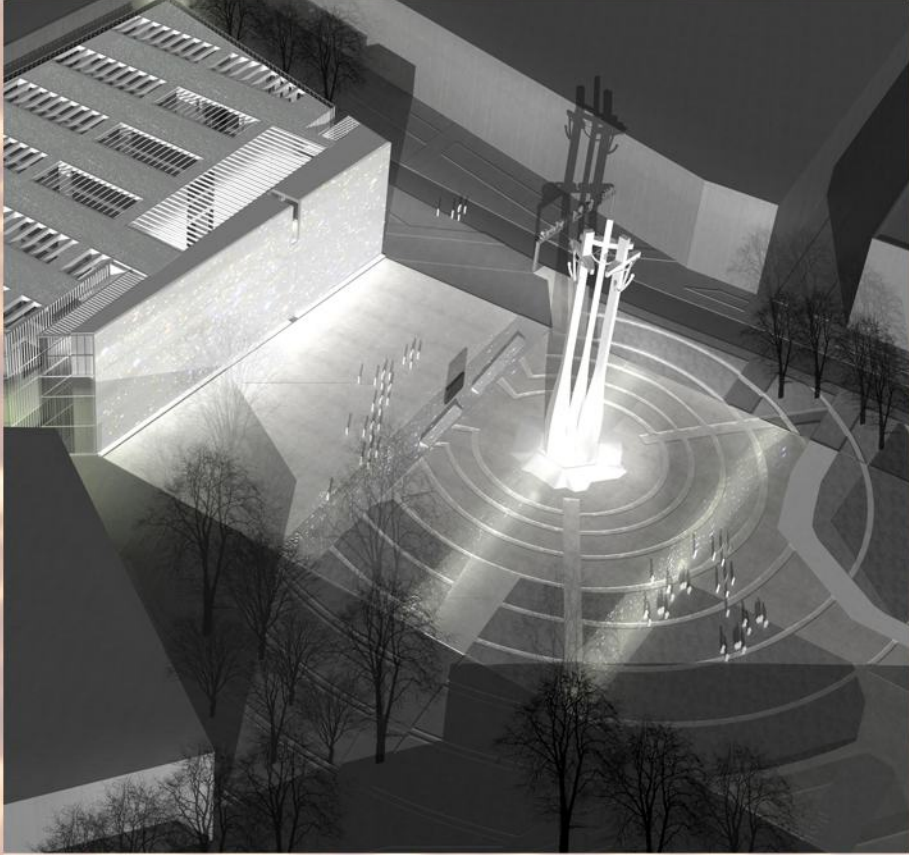
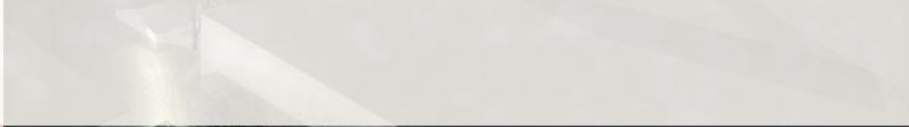
A MEETING POINT

The square is formed in front of the planned building. Its area unambiguously integrates the monument, the European Solidarity Center building, the avenue – the Road to Freedom and the avenue from the railway station. The form and proportions of the square resemble the Długi Targ. It will be the only symbol of Solidarność visible from outer space. The square is formed by an elongated concrete area threaded onto the axis of the avenue leading to the railway station. The concrete surface is interrupted by successive cracks: 1956, 1968, 1970, 1976 and 1980. Wild flowers spring from these crevices: poppies, heather, sunflowers, night-scented stock - symbols of hope. The concrete shell is also pierced by individual victims of the communist regime. They make it possible to plant trees, shrubs or flower beds. The square pays homage to the past but serves the future. It will be the only large square so well communicated with the rest of the city on which to organize mass events, concerts, or festivals on national and European scale.

Dimensions of the square: 260 m x 70 m.
The square can accommodate 100.000 people.
The square is delimited by a double tree lane, with streets running along its perimeter.



BUILDING
GATE
MONUMENT
PARK
TOWER BLOCK
TREE LINE OF THE
ROAD
TRACES OF THE PAST
ALLEY TO THE TRAIN
STATION



MONUMENT

SACRIFICE, MEMORY

The most important emblem of "Solidarity" in Gdansk is the Monument to the Fallen Shipyard Workers. It is the only symbol of Polish fight for independence and democracy after Second World War that is clearly recognizable worldwide. Together with the Crane, the Town Hall, and St Mary's Church it defines the identity of the city.

Every other form must fall silent in confrontation with the monument.

The building from the side of the square must remain silent. The European Solidarity Center wall from that side must only be the background for the monument.





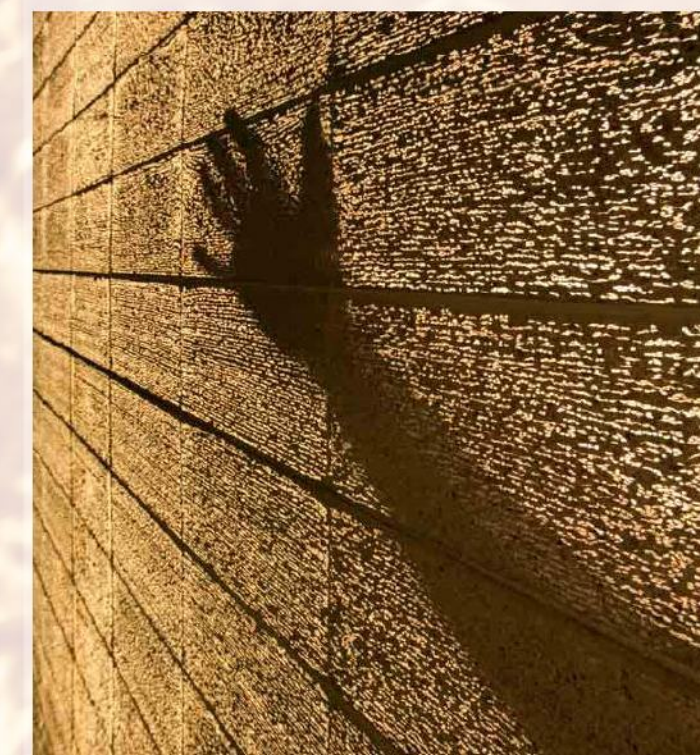
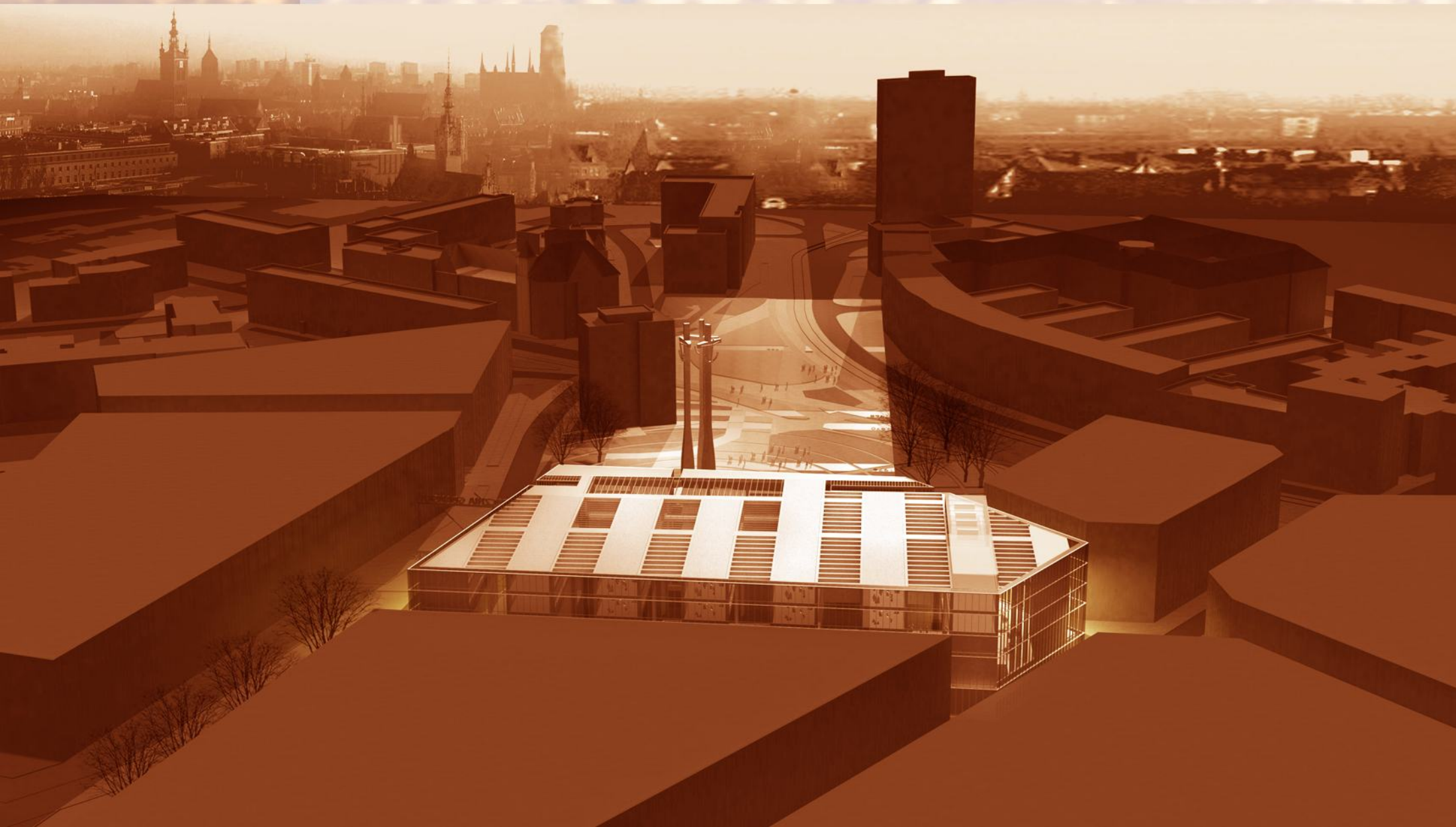
CONTEMPLATION – SILENCE

CRACK

The only opening in the Wall of Light is a crack through which the Crosses of the Monument can be seen from the John Paul II Room and the garden.

The Church as personified by John Paul II was the only connection with the spiritually free world. It was also a fracture in the communist wall.

The monument is also visible through the crack from the office of the former President Lech Walesa.



CONCRETE THAT SHINES

WALL

The solid concrete wall is a symbol of silence before the Monument to the Fallen Shipyard Workers . During the day, from the outside, the material resembles ordinary white rough concrete. In the night, the wall becomes transparent, and from a distance it looks as if it were translucent.

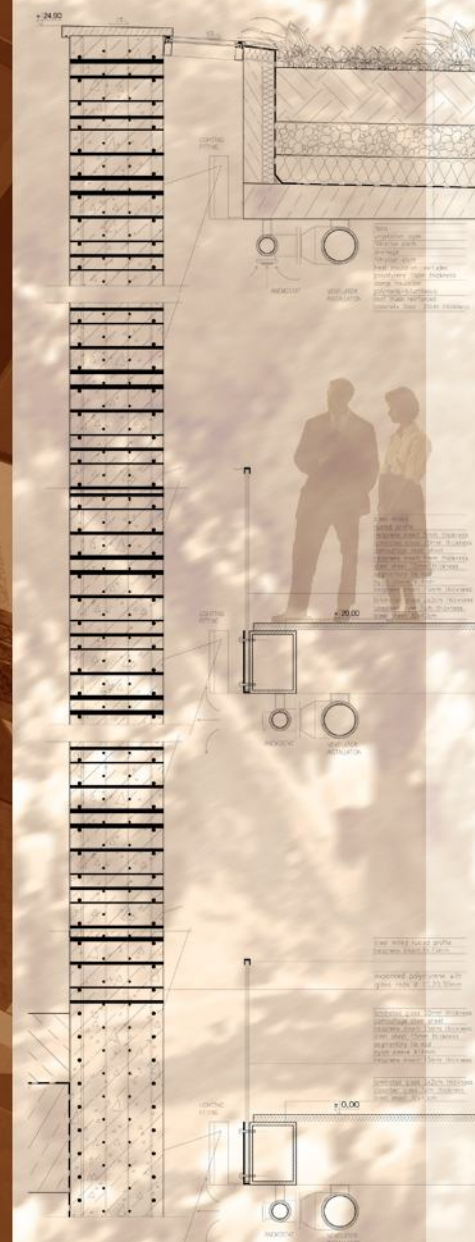
The concrete wall will be pierced by millions of light beams which symbolize millions of Solidarity members.

It was them who abolished, without a single gun shot, and dematerialized the concrete of communism. Thanks to them, the Berlin Wall which divided Europe was bulldozed later. Inside the building, the concrete wall becomes a Wall of Light, penetrated by millions of sun beams.

The effect of a concrete wall that disappears is produced by solid concrete with glass rods set in it. Monolithic, hand-grinded 45cm thick wall has glass rods attached to the reinforcement.

From the inside, the Wall of Light is available from glass platforms, allowing a look at it from the entrance hall. Thus, it forms the space of a permanent exhibition, enhancing its message with the symbolism behind ten million rays of hope. In some rooms, the rays form words on the wall: John Paul II, Lech Wałęsa, or dates: 1970, 13 XII 1981... The wall and sounds are trapped in a closed, glass case visible from the hall. On other floors, we hear authentic voices of Solidarity members telling their story. On special occasions, the wall also speaks on the side of the square, with a hovering sound of protesting crowds chanting the word "SOLIDARITY". This call is just as important as the sound of Sigismundus Bell or the bugle call from St. Mary's church.

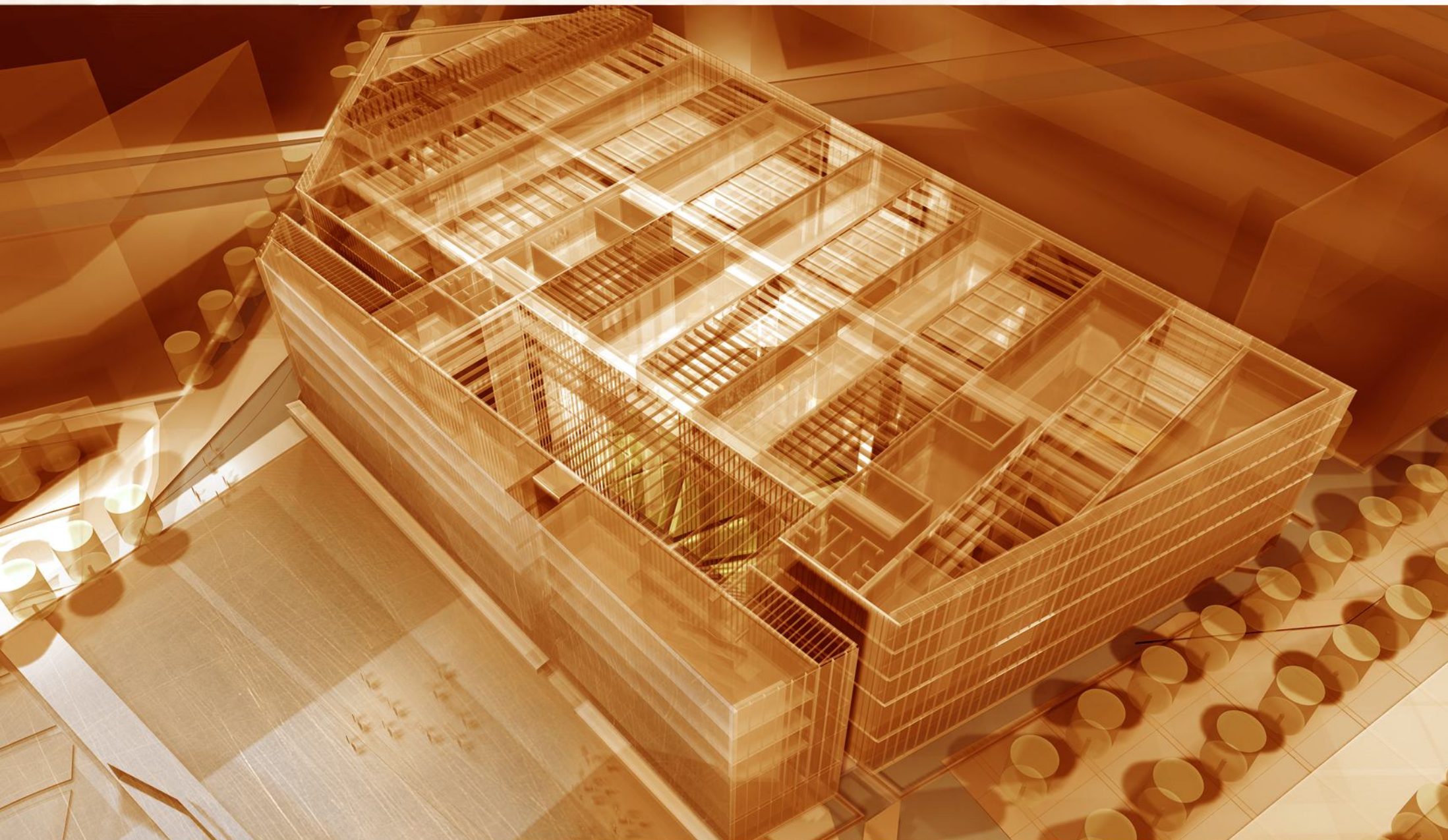
BUDYNEK





MAIN ENTRANCE

FUNCTIONS — SCALE OF THE BUILDING



LEVEL +20.00 – OFFICES

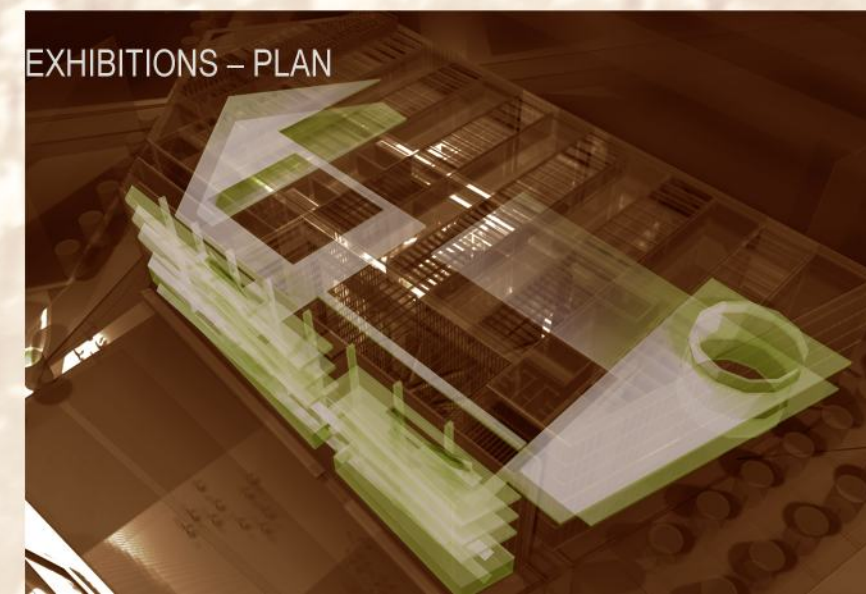


LEVEL + 6.00 – MEZZANINE
MEDIA LIBRARY, READING ROOM, WORKSHOPS

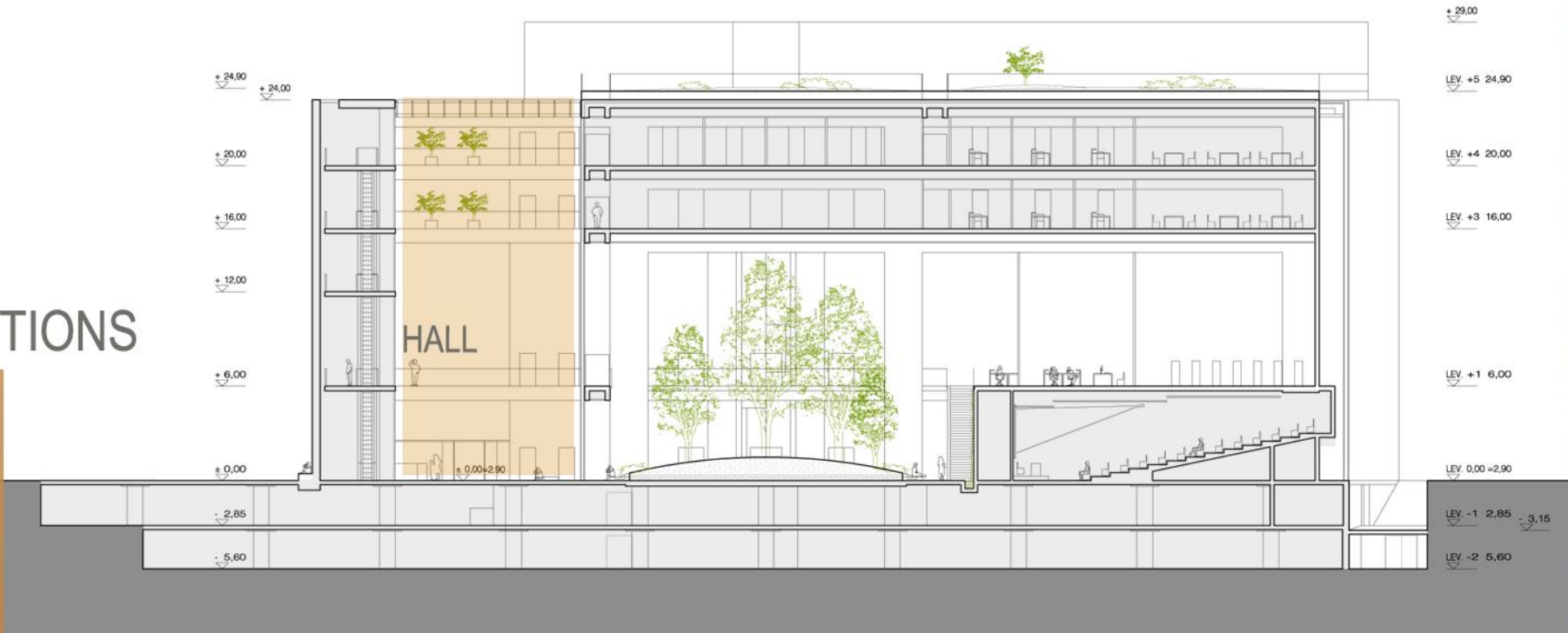


LEVEL 0.00 – GROUND FLOOR

EXHIBITIONS – PLAN



CROSS-SECTIONS



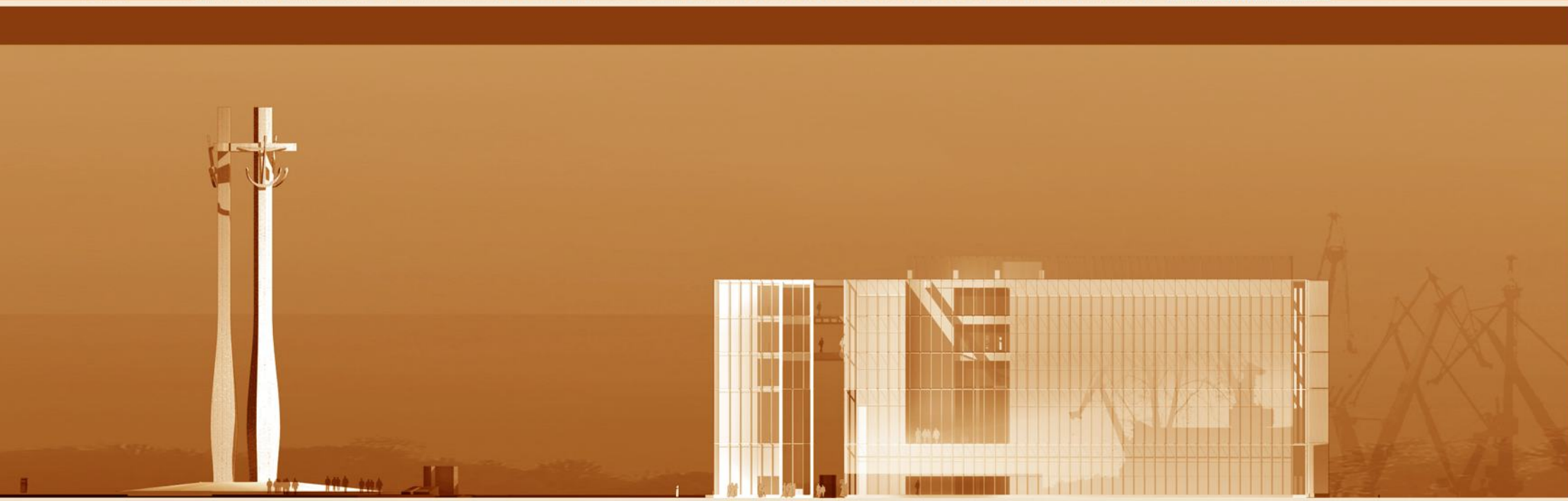
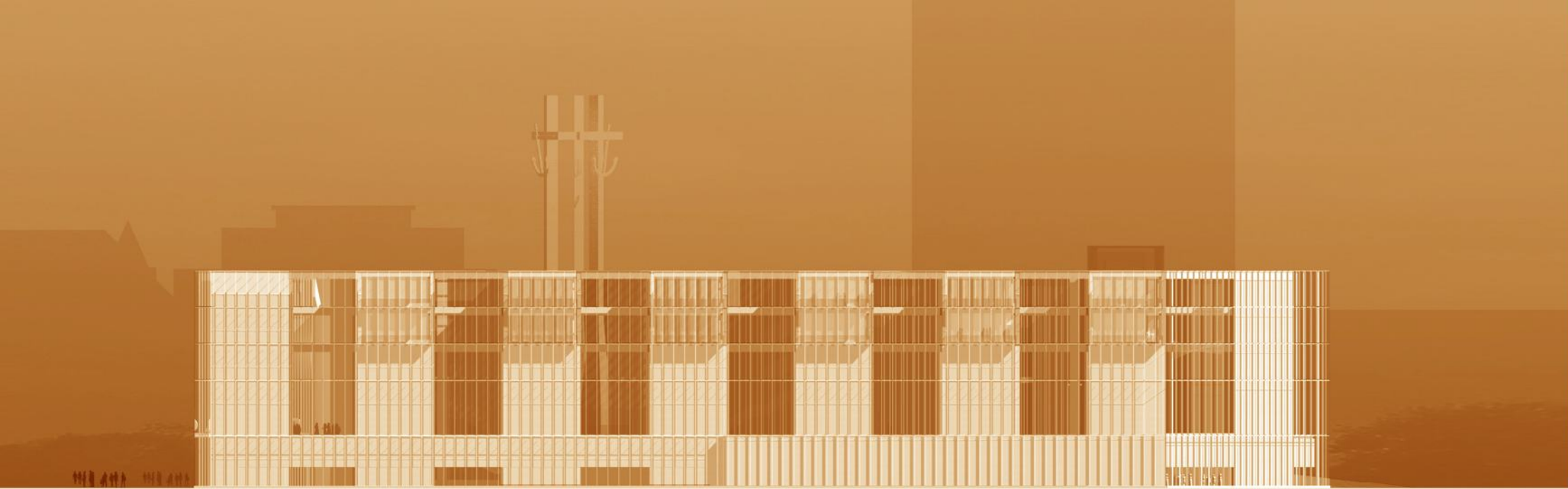
WINTER GARDEN

MEDIA LIBRARY



WINTER GARDEN





FACADES

NORTH

EAST

WEST



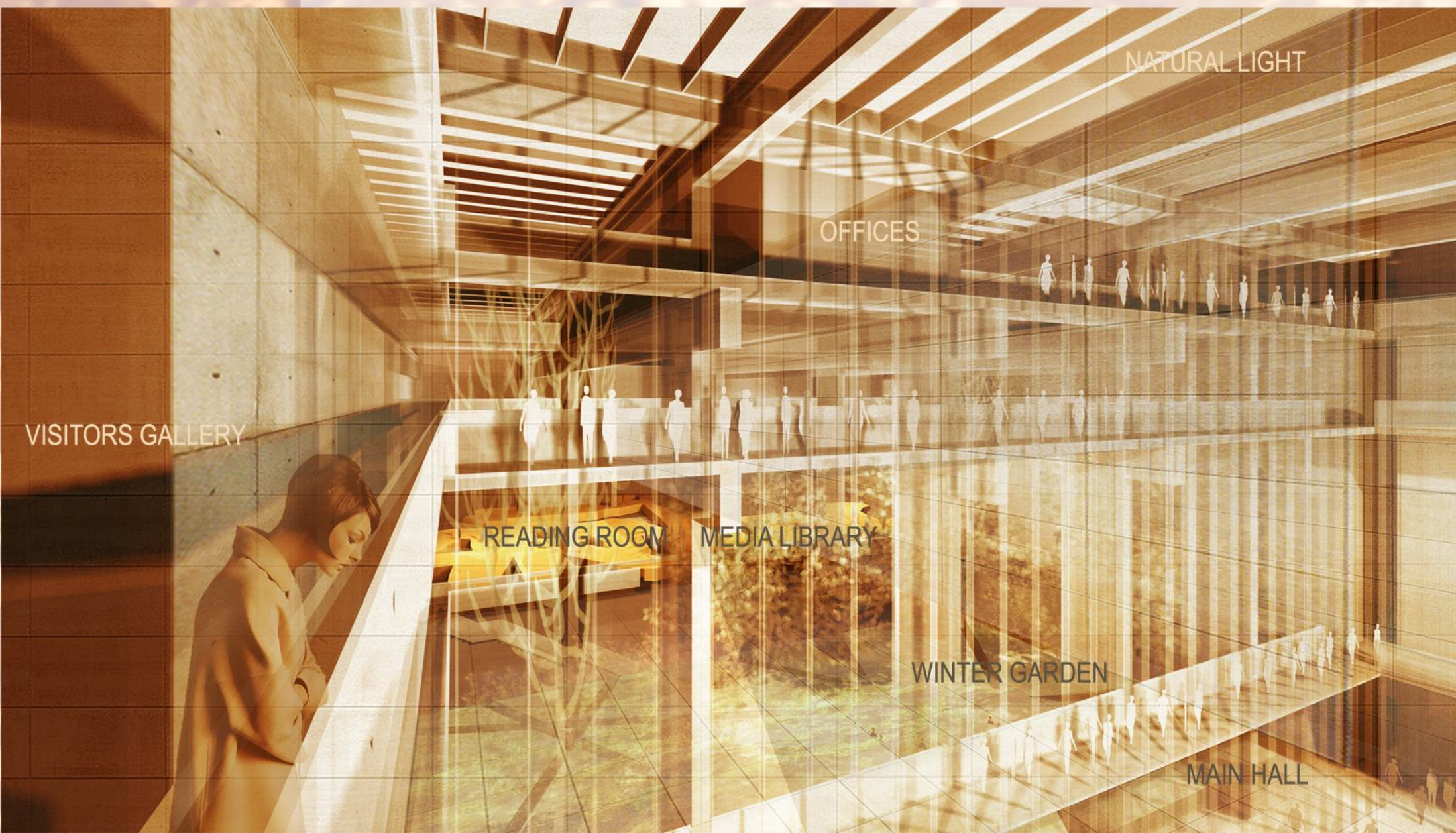
EXHIBITION ZONE

WINTER GARDEN



MAIN ENTRANCE SKYLIGHT

MAIN HALL, VIEW FROM THE MAIN ENTRANCE



NATURAL LIGHT

OFFICES

VISITORS GALLERY

READING ROOM

MEDIA LIBRARY

WINTER GARDEN

MAIN HALL

LIGHT, SPACIOUS INTERIORS WITH PLENTY OF SUNLIGHT
CLEAR AND LOGICAL STRUCTURE

VIEW OF THE HALL AND WINTER GARDEN FROM THE EXHIBITION GALLERY



SKYLIGHTS

FOOTBRIDGES FOR PEDESTRIANS

OFFICES SUSPENDED UNDER THE ROOF

THE FUTURE

SCALE OF THE INTERIOR
LOGIC OF THE
STRUCTURE

MAIN HALL
– CIRCULATION, MULTIFUNCTIONALITY

Main hall – longitudinal hall 24 meters high, bathed in sunlight. It is an indoor town square from which all functions in the building are clearly visible.

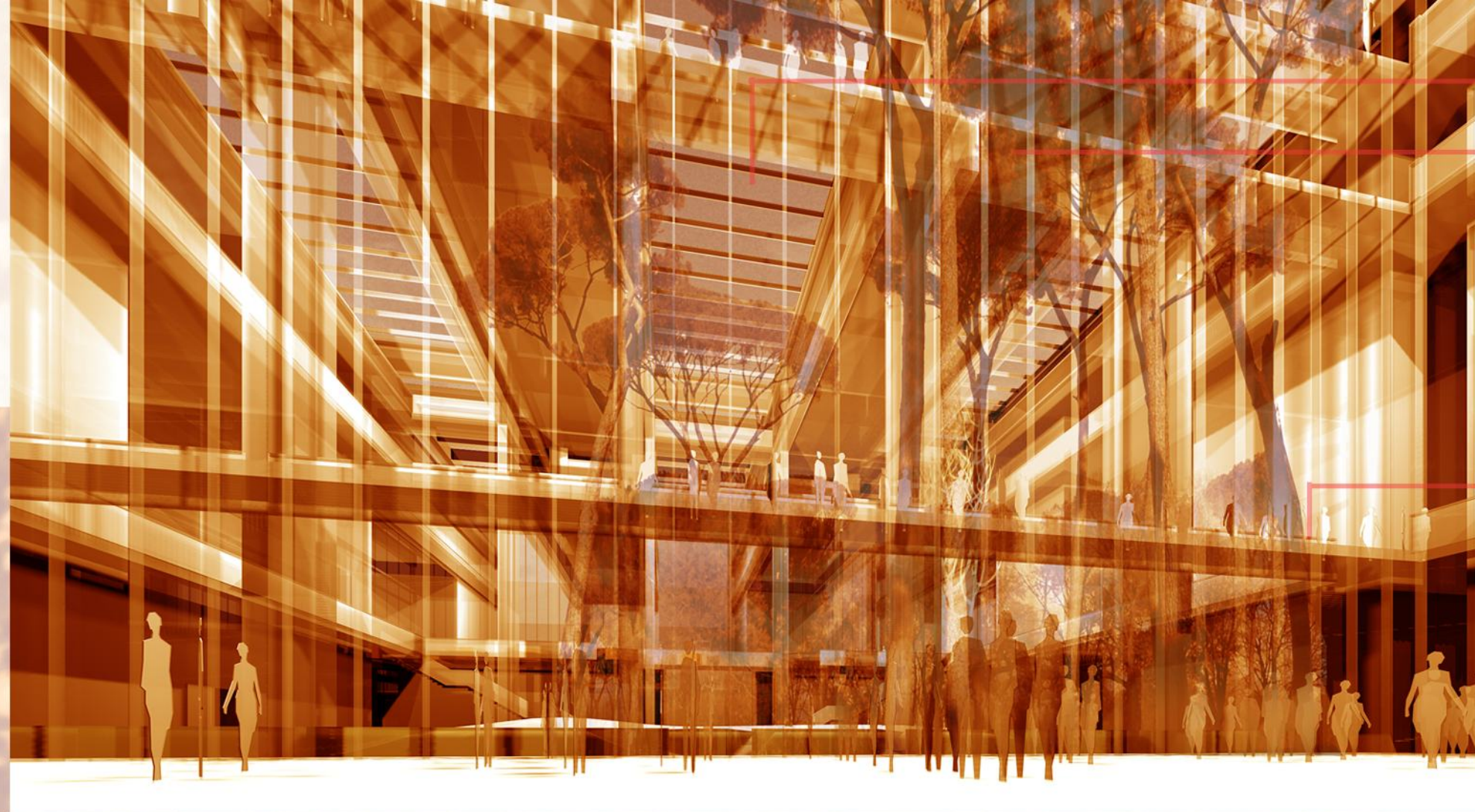
The square connects directly with the entrance to the exhibition area and is also connected with the winter garden, conference rooms and the chapel. Panoramic lifts from the square provide access to offices under the roof and the roof-top restaurant. The square is connected with the city via two independent entrances/streets/docks 8 m wide and 24 m high.

The square can be used to hold commercial events as it is possible to completely separate it from the remaining functions of the building.

ENTRANCE

MAIN HALL

WINTER GARDEN

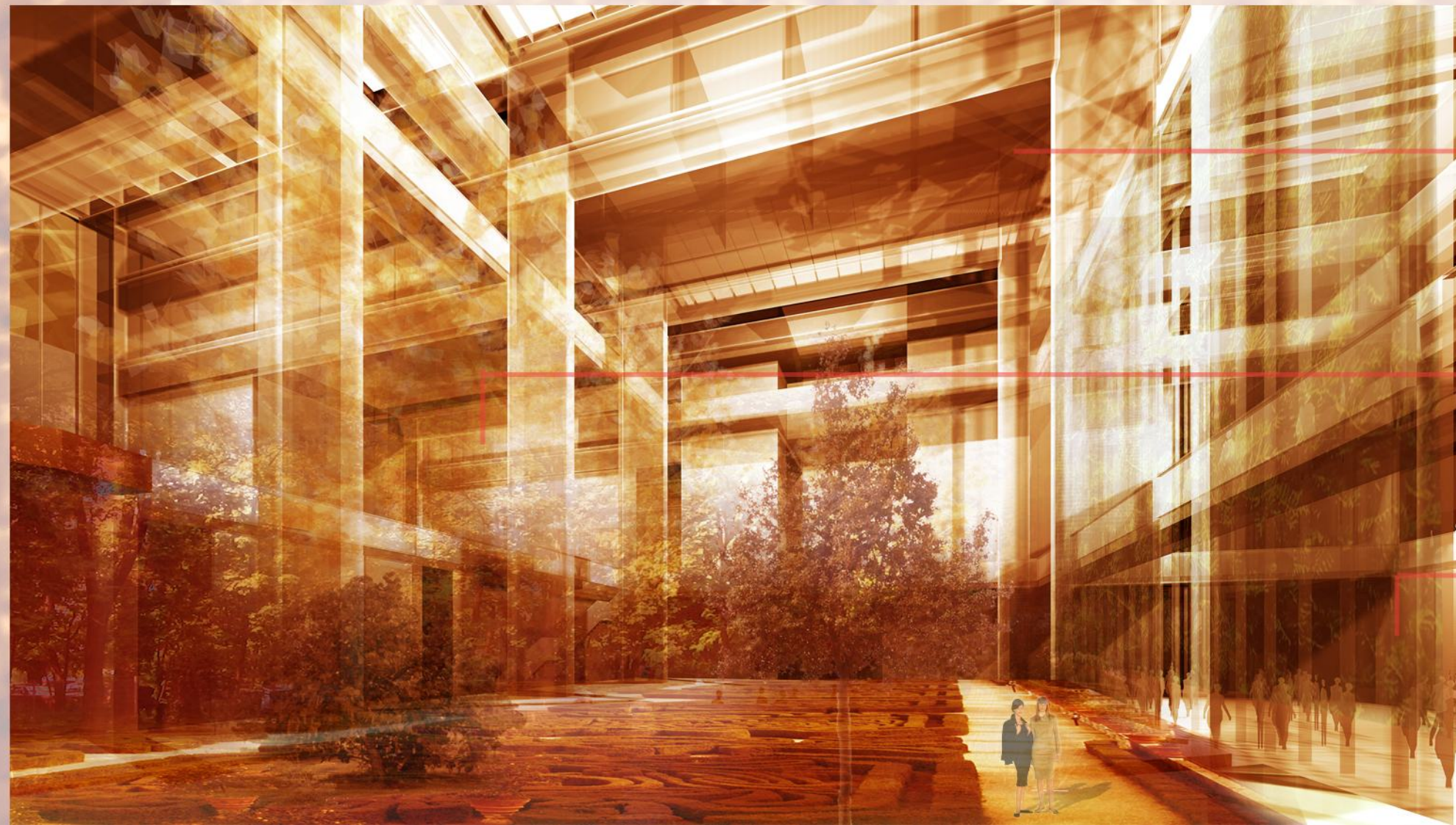


SKYLIGHTS

OFFICES SUSPENDED UNDER THE ROOF

FOOTBRIDGES FOR PEDESTRIANS

WINTER GARDEN
VIEW FROM THE MAIN HALL



OFFICES SUSPENDED UNDER THE ROOF

MEZZANINE
LIBRARY, MEDIA LIBRARY
OPEN TOWARDS THE GARDEN

MAIN HALL

WINTER GARDEN, VIEW OF THE INTERIOR
LOW GREENERY ARRANGEMENT

SKYLIGHT IN THE ROOF

MONUMENT VISIBLE FROM THE INSIDE OF THE BUILDING

OFFICES SUSPENDED UNDER THE ROOF

FUTURE

SPACE – LIGHT

WINTER GARDEN – A CATHEDRAL
OF FREEDOM

The building of the European Solidarity Center brings a unique message - it forms part and expression of freedom and democracy in Europe. Within the building, those values can only be symbolized by the internal park - the winter garden.

Lush and rich greenery bathing in sunlight pouring from above establishes the inner structure. The multilevel park, 12m high, available to all employees and guests of the European Solidarity Center and filled with daylight is a cathedral of freedom addressed to the future. Palpably open space of the garden constitutes the most profound symbol of freedom of the society and the individual human being.

Behind the straight, concrete wall there is a 5-storey high, interlaced area of the winter garden. Floating above the garden and connected with it are:

- a library,
- a reading room,
- media room
- creative workshops.

Other office premises are suspended high beneath the roof.

The park houses the John Paul II Room, Solidarity Museum, multifunctional rooms and a temporary exhibition.

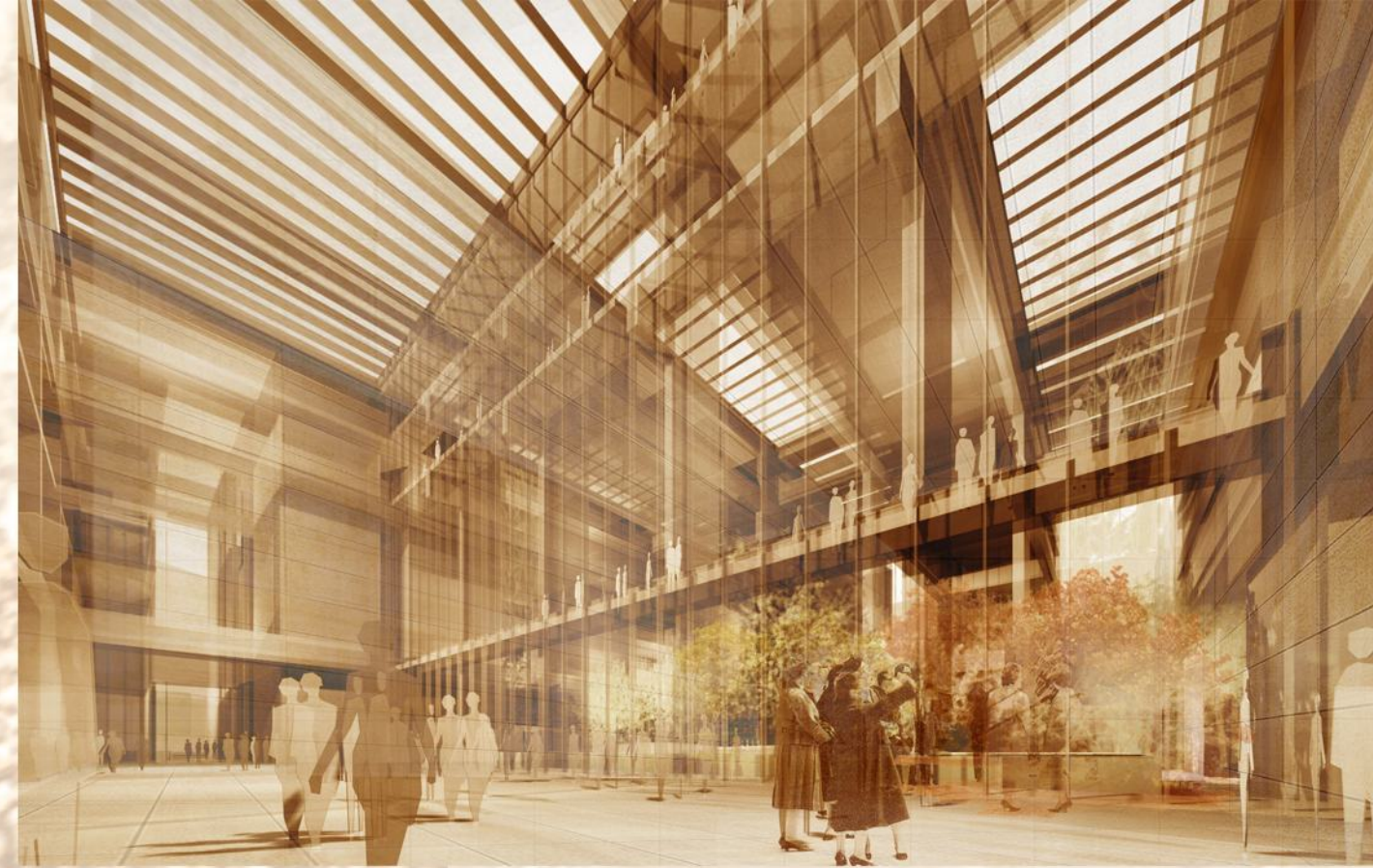
WINTER GARDEN, VIEW FROM THE MEDIA LIBRARY AND CONFERENCE ROOMS

LEVEL -2, -1 CAR PARKS, DELIVERIES, STORAGE

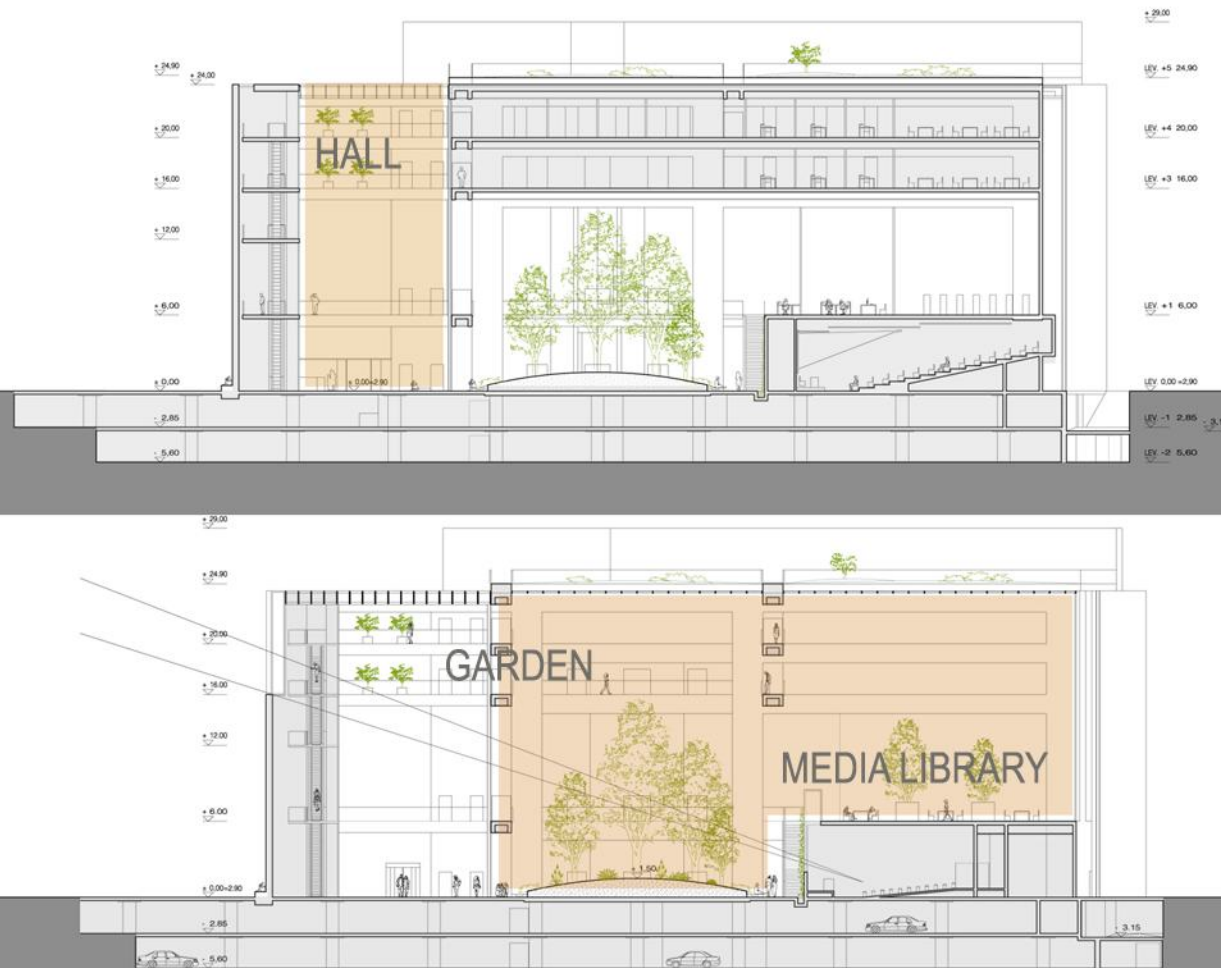


LEVEL 0 MAIN HALL, WINTER GARDEN, CONFERENCE ROOMS, CHAPEL, EXHIBITIONS





VARIANT WITH COVERED GARDEN





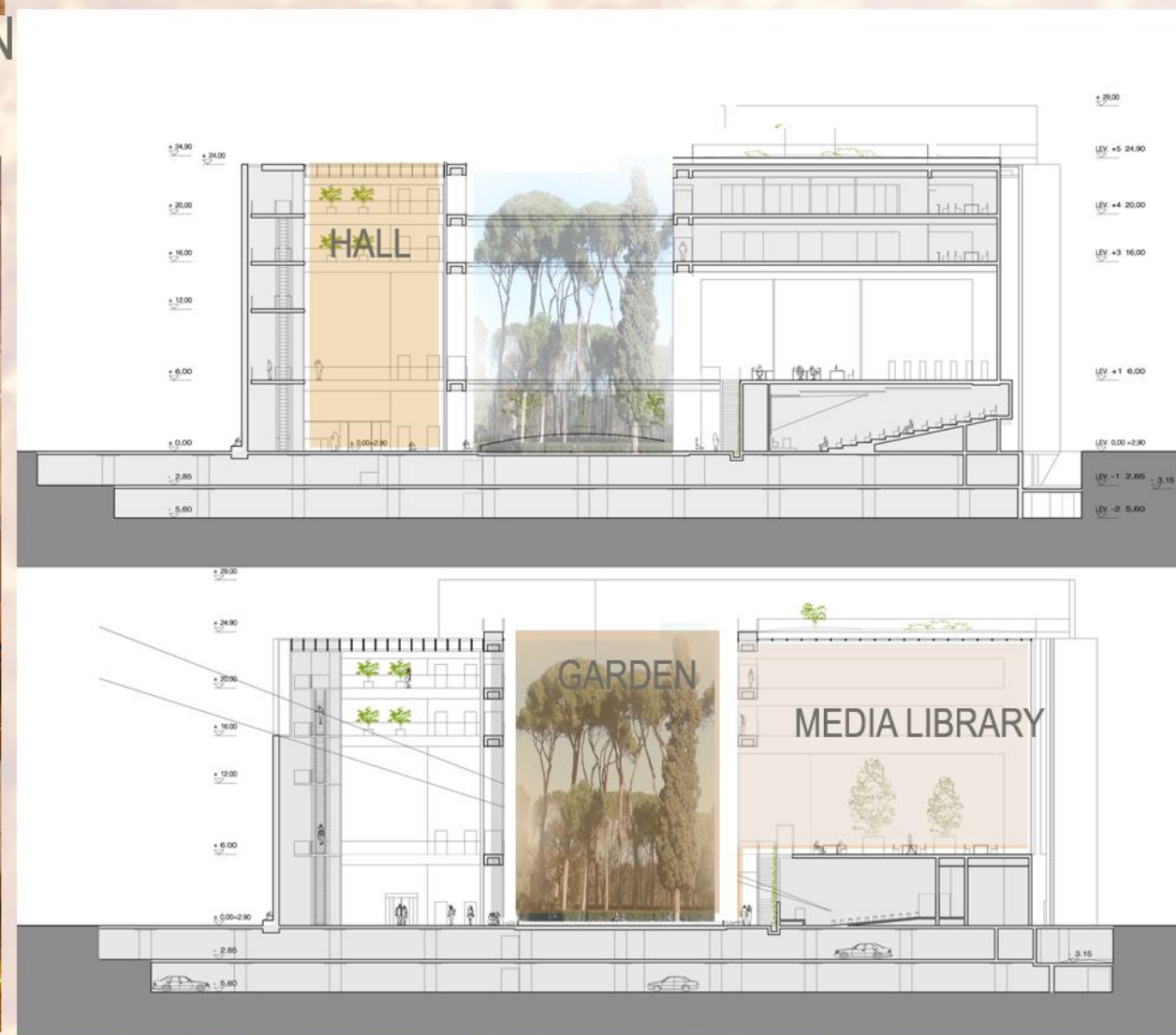
HALL – VIEW OF THE GARDEN



VARIANT WITH OPEN-AIR GARDEN



GARDEN





INTERNATIONAL ARCHITECTURAL COMPETITION FOR THE EUROPEAN SOLIDARITY CENTER BUILDING

II PRIZE

AUTHORS

GRAY INTERNATIONAL

Ryszard Leśniewski
Janusz Klikowicz

STELMACH I PARTNERZY

Bolesław Stelmach
Marek Zarzeczny

GRAY INTERNATIONAL

Al. Jana Pawła II 80
00-175 Warszawa
Tel: 48 (22) 435 18 00
Fax: 48 (22) 435 12 18

GRAY INTERNATIONAL

Oddział Regionalny Gdańsk
Ul. Spichrzowa 29/30
80-750 Gdańsk
Tel: 48 58 320 88 11
Fax: 48 58 320 44 24

STELMACH I PARTNERZY

Ul. Krakowskie Przedmieście 55
20-076 Lublin
Tel: 48 81 743 73 15
Fax: 48 81 743 73 17